



# A HUB FOR BUSINESS

An exclusive collection of Blue Chip office spaces primarily situated on the Gqeberha beachfront.

# MORE THAN JUST ANOTHER GQEBERHA ADDRESS

What if coming to work, didn't feel like coming to work? What if it was just an extension of you – your brand – your vision?

---

# KEY POINTS

LOCATION 5

VACANCIES 8

TENANTS 14

DEVELOPMENT 15

BUILDING LAYOUT 16

CONTACT 17

# LOCATION, LOCATION, **LOCATION**

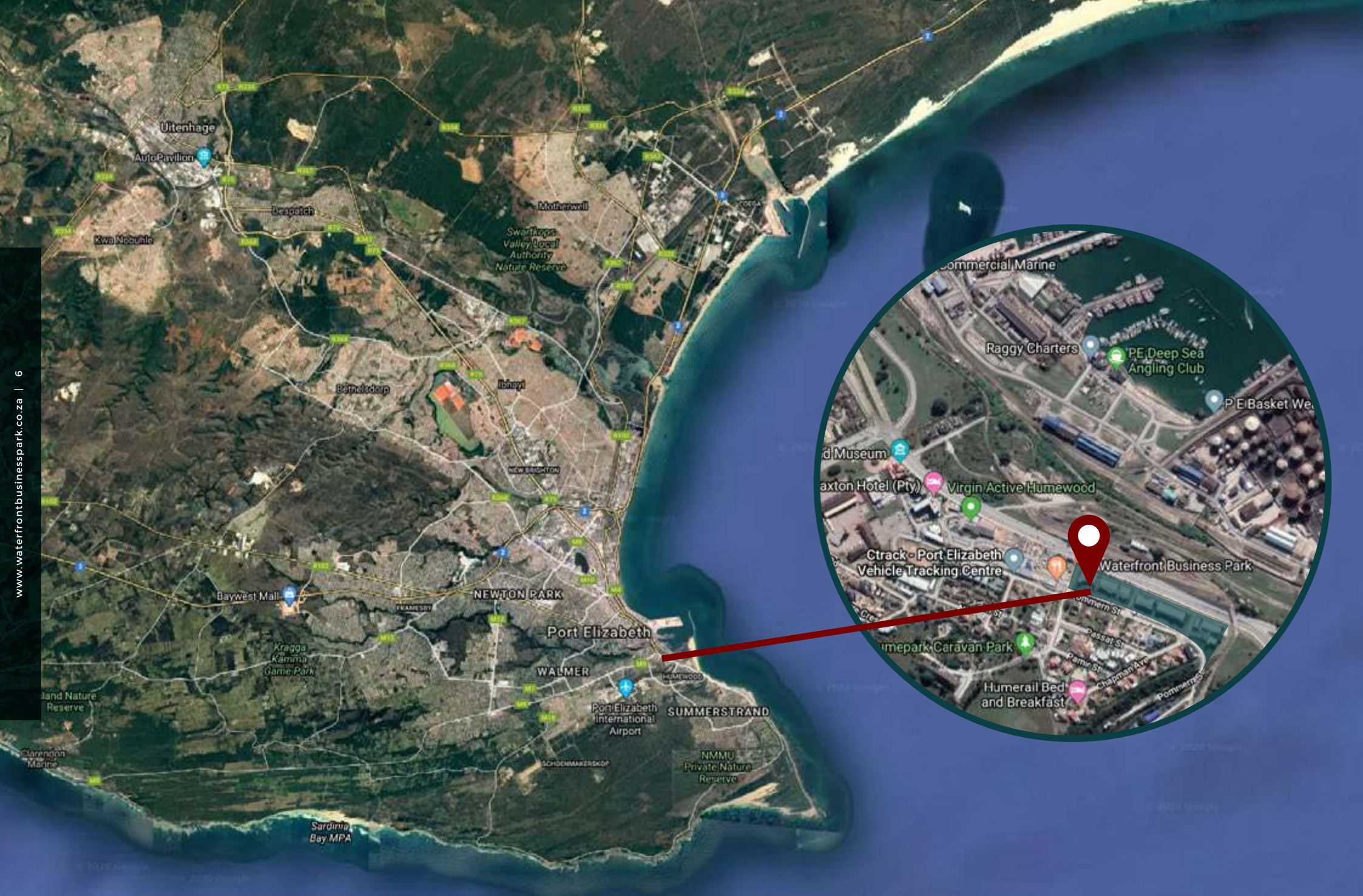
## MORE THAN JUST ANOTHER **GQEBERHA ADDRESS**

Waterfront Business Park is strategically located in Humerail, at the threshold of Gqeberha's harbour, bordering a main arterial road that accesses the busy beach side suburbs of the city.

This impressive development stretches from Perrott Street on the eastern side towards where the narrow gauge railway line crosses over Humewood Road on the western side.

It is ideally situated for businesses looking for commercial office space with the most spectacular views of the Gqeberha harbour and the full expanse of Algoa Bay.





# DON'T SETTLE FOR ORDINARY

## VIEW OUR VACANCIES



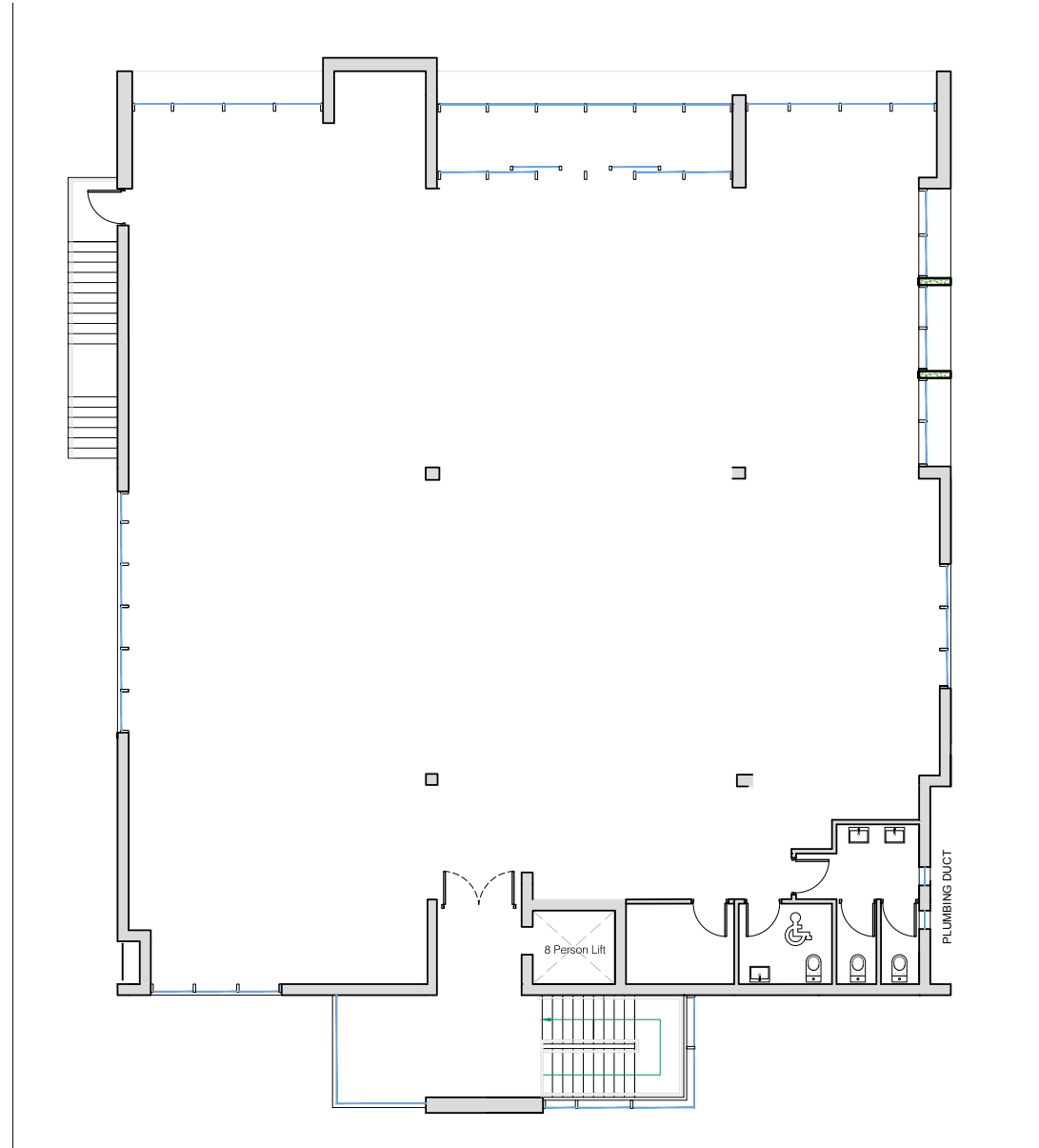
# RENTAL OPPORTUNITY 1 BUILDING 3 - UNIT 1

400M<sup>2</sup> OF PRIME OFFICE SPACE WITH VIEWS  
OF ALGOA BAY AND THE HARBOUR

**RENTAL RATE ON APPLICATION**



# VACANCY 1 FLOOR PLAN



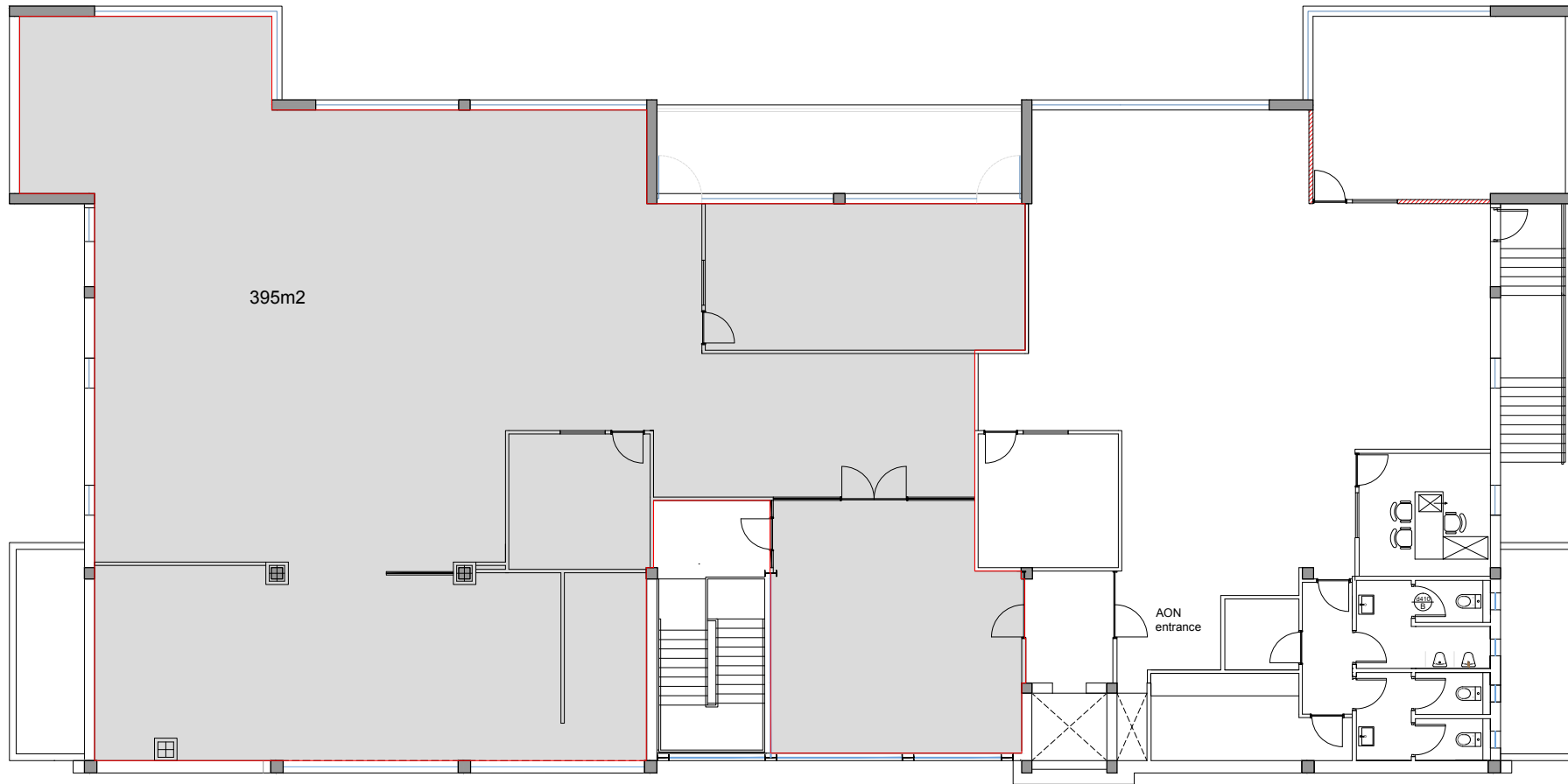
# RENTAL OPPORTUNITY 2 BUILDING 4 - UNIT 1A

395M<sup>2</sup> OF PRIME OFFICE SPACE WITH VIEWS  
OF ALGOA BAY AND THE HARBOUR

RENTAL RATE ON APPLICATION



# VACANCY 2 FLOOR PLAN



Waterfront Business Park  
Building 4 Unit 1a  
First Floor

# CURRENT TENANTS



AFRICA



**BUILDING 1**  
**Unit 1:**  
Logwin Air & Ocean  
Mazars - Port Elizabeth  
Ninety One

**Unit 2:**  
Chartered Wealth Solutions  
C. Steinberg Bridge

**BUILDING 2:**  
Investec Bank Limited

**BUILDING 3:**  
CA Trust Company  
Client Care

**BUILDING 4:**  
AON South Africa  
Profecia IT  
Global Business Solutions  
Kirchmanns Inc

**BUILDING 5:**  
Momentum  
EDF Renewables  
MTN  
Nolands

**BUILDING 6:**  
Coca-Cola Beverages Africa

**BUILDING 7:**  
Coca-Cola Beverages Africa



# DEVELOPMENT

This exclusive development node is the result of a joint venture between the JH Group and Inscape Properties.

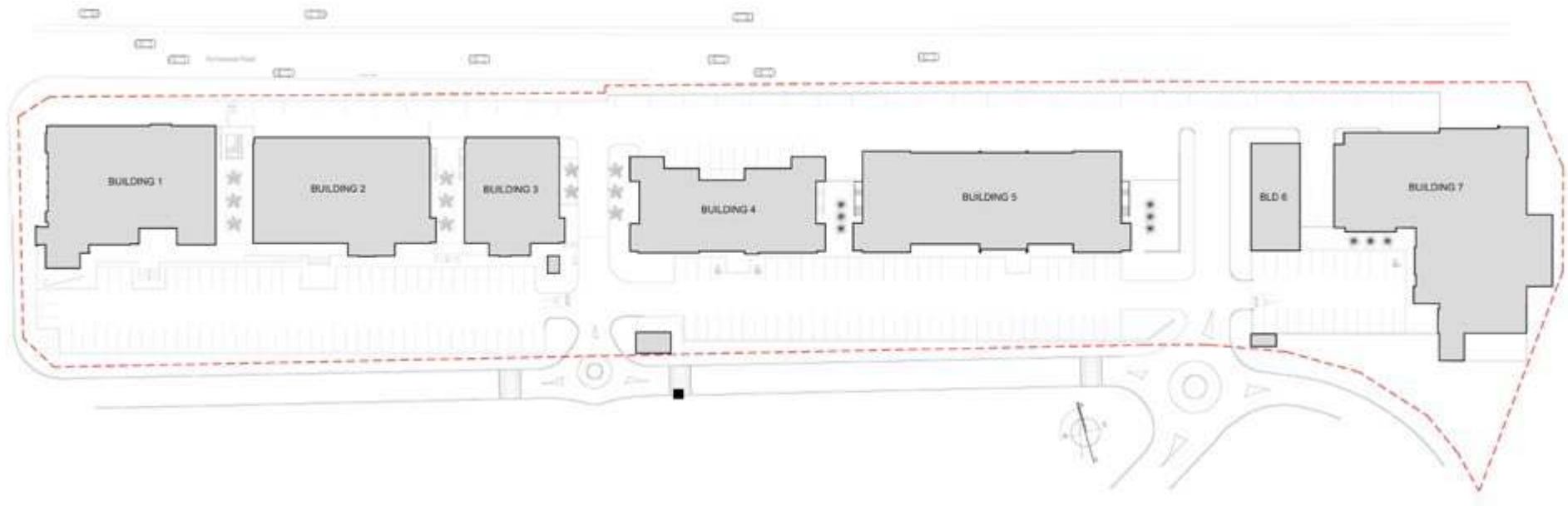
Located on a prime sea-facing site, the project was initiated by JH Group and Transnet SOC Ltd as part of the upliftment and development of the Humewood surrounds.

These modern buildings, with a double glazed facade, were designed to maximize the view of the Gqeberha harbour and Kings Beach. The contemporary office environment is largely open plan – offering a spectacular view from almost anywhere in the office area.

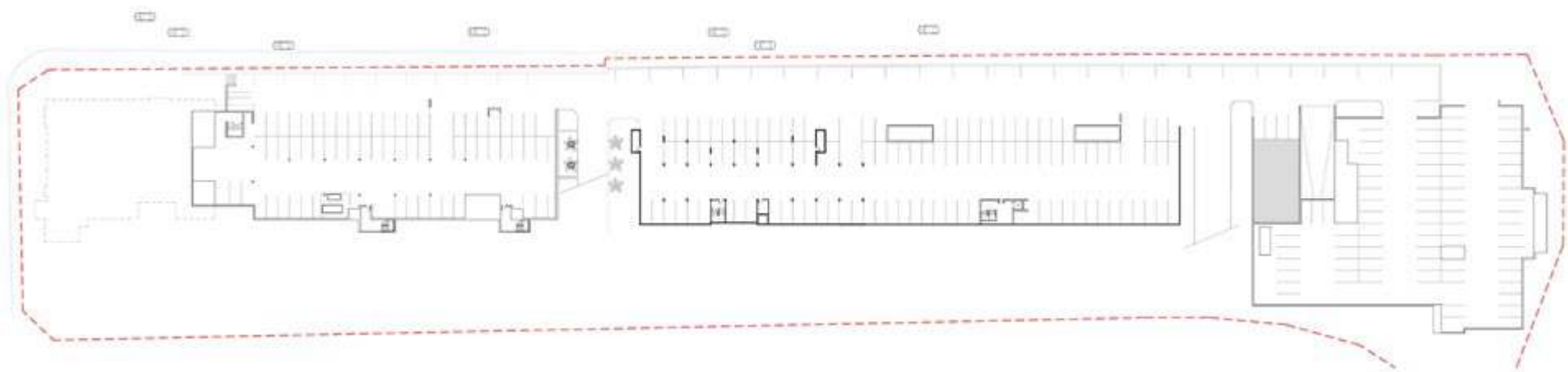
Waterfront Business Park has a GLA in excess of 10 300m<sup>2</sup>.

# BUILDING LAYOUT

## Ground Floor Layout



## Basement Layout



# CONTACT US

**EUGENE McNAMARA**

JH Group Property Manager

Cell: 076 512 6129

Tel: 043 726 5349

Email: [property@jhgroup.co.za](mailto:property@jhgroup.co.za)

Web: [www.waterfrontbusinesspark.co.za](http://www.waterfrontbusinesspark.co.za)



**WATERFRONT**  
BUSINESS PARK